



**RIGHT PRICE
EVERY DAY!**

**SAVING YOU
MORE**

Sale Starts 11/5/25 - Sale Ends 12/23/25

\$79

CRAFTSMAN

9 GAL. WET/DRY VACUUM

8.3A. Ideal for medium-sized jobs around the garage, home, renovations and jobsite. No. CMXEVBE17590 (CMXEVBE17590)



39⁹⁹

Comfort Glow.

**ELECTRIC FAN AND
FORCED AIR HEATER**

Two heat settings provide warmth throughout the cooler months while two fan-only settings provide a cooling breeze during warmer months. No. EFH1527 (EFH1527)



***FREE
DELIVERY
WITHIN
STRIKING
DISTANCE
OF OUR
STORES**

**Hammond
Lumber Company**

**SALE
PRICES
ONLY AT THE
10 STORE
LOCATIONS
LISTED ON
PAGE 8**

DEWALT



\$89

**14 PC. CORDLESS SCREWDRIVER
W/ FLEXDRIVE™ CONTROL**

Includes USB charging cable and (12) 2" bits. (DWH766719)



\$79

**PORTAMATE
SPEEDHORSE
SAWHORSE**

Each individual unit can support 1,500 lbs. More length means more stability. (PM4500)

3⁹⁹

**PRIME GUARD 1 GAL.
RV & MARINE
ANTIFREEZE**

Added to RV and marine plumbing systems to stop water pipes from freezing in very cold temperatures. No. 95806 (NTAF)



**YOUR
CHOICE 7⁹⁹**

12 OZ. FOAM & FILL®

Insulates and prevents drafts. Can be sanded, painted or stained. For interior or exterior use. Max Fill fills gaps over 1". (820624-466037)



**\$5 OFF
Gallon**

Benjamin Moore

**ben® ACRYLIC LATEX
INTERIOR PAINT**

MATTE

Scuff and spatter resistant. (BMN6241XG, BMN6242XG, BMN6243XG, BMN6244XG)

EGGSHELL

Premium hide and leveling. Self-priming on most surfaces. Great washability. (BMN62601G, BMN6261XG, BMN6262XG, BMN6263XG, BMN6264XG)

SATIN/PEARL

Great for touch ups and fixing. Scuff-resistant. (BMN62801XG, BMN6281XG, BMN6282X, BMN6283XG, BMN6284G)

SEMI-GLOSS

Ideal for surfaces that require frequent cleaning. (BMN62701XG, BMN6271XG, BMN6272XG, BMN6273XG, BMN6274XG)



69⁹⁹

DEWALT

**30 PC. TOUGH BOX
1/4" & 3/8" SOCKET SET**

This comprehensive set includes ratchets, sockets, and other versatile accessories ideal for a wide range of jobs. Featuring sockets with powerjaw technology. (DWM745412)



**YOUR
CHOICE 59⁹⁹**

**8 PC. SAE OR METRIC
COMBINATION WRENCH SET**

Help maximize reach and leverage – access hard-to-reach places with the long panel wrench design. High visibility markings. (DWM745427) (DWM745426)



69⁹⁹

DEWALT

**23 PC. TOUGH BOX 1/2" DRIVE
SOCKET SET**

2.5 degree arc swing – access tough spots with a 144-tooth dual pawl mechanism that delivers a 2.5 degree arc swing. (DWM745414)



DRAFTING SERVICES

Building a new home or fixing up an old one?

Just bring your ideas and rough sketches to any Hammond Lumber Company location and our team of professional home designers will work with you to create the drawings and material list you need.

- Custom Homes
- Additions
- Remodels
- Garages
- FREE consultation and material estimates
- FREE drawing after materials purchase

HammondLumber.com/homeplanning

**Hammond
Lumber Company**



\$149

**M12™ TOUGHSELL
HEATED VEST**

Extended waistline and drop-tail back prevents riding up while working. Sizes Med. - 2XL. No. 304G-20 (304G-202x, 304GL-20L, 304G-20M, 304G-20XL) Vest only; no battery. While supplies last.



\$159

**M12™ HEATED
HOODIE**

A hidden battery pass-thru pocket construction allows for front or back battery placement. Sizes Med. - 2XL. (306B21M, 306B21L, 306B21XL, B306212X)



\$174

**M12™ TOUGHSELL
HEATED JACKET**

One-touch LED controller with (3) heat settings per zone (High, Medium, Low). Sizes Med. - 2XL. (M100B21SL, M100B21M, M100B21L, M100B212X)

**SEE
MANY
MORE
GREAT
DEALS
INSIDE**

**RIGHT PRICE
EVERY DAY!**

**SAVING YOU
MORE**

Suet Plus

YOUR CHOICE

1⁵⁹

WILD BIRD BLEND SUET CAKES

11 Oz. Easy open, no mess.
Wild Bird, Peanut, Nuts & Berry
or Woodpecker. (WS202, 203, 204, 209)



29⁹⁹

ELECTRONIC PEST REPELLER

Powerful ultrasound waves
repel rodents, insects and other
pests. Protects up to 3500 sq. ft.
Harmless to humans and pets.
(TRANSONIC)

1⁹⁹
MOUSE TRAPS

2 pack. Easy set. (M150)

9⁹⁹

4-PK. DISPOSABLE BAIT STATION

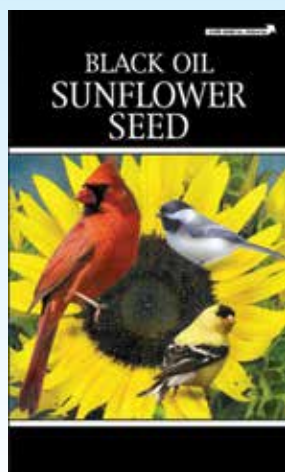
(TC0371610)

9⁹⁹

REFILLABLE MOUSE KILLER STATION

Includes eight 1-oz.
blocks. No. 22478
(TC0372010)

BE READY FOR WINTER - WE CAN HELP



24⁹⁹

40 LB. BLACK OIL SUNFLOWER SEED

Attracts a wide variety of birds.
(40BLACKSUN)



22⁹⁹

40 LB. FARMER'S DELIGHT WILD BIRD FOOD

Blended with aromatic cherry
flavoring. (BCI298785)



29⁹⁹

20 LB. NUT 'N FRUIT BIRD FOOD

A premium wild bird food
blended to attract and feed the
most desirable outdoor pets.
No. 366200 (BCI099023)



29⁹⁹

14 LB. SIZZLE 'N' HEAT BIRD FOOD

A premium hot blend designed
for birds only. Squirrel deterrent.
No. 372140 (BCI097072)



14⁹⁹

18" POLY SNOW SHOVEL

36" steel handle with poly grip.
16.5"W x 14.5"H blade.
No. 27PBG (RUGG27PBG)



15⁹⁹

20" SNOW PUSHER

Molded D-grip handle.
Non-abrasive, safe for all surfaces.
No. 34PD-S (RUGG34PDS)



54⁹⁹

16' ROOF RAKE

24" blade. With a
telescoping pole.
No. RR24 (RR24)



HY-KO

3⁹⁹ Each

4' DRIVEWAY MARKER

3-1/4" 2-sided reflector.
48" twisted aluminum rod.
Red or Blue.
No. DM-100-R-48
(02906910236)
No. DM-100-B-48
(BLUERELECT)

2⁹⁹ **HY-KO**

4' ORANGE SAFETY MARKER

Tapered end allows
for easy placement.
4-1/2" of reflective tape.
No. DM80048 (307462)

THE HILLMAN GROUP

3⁹⁹

72" REFLECTIVE DRIVEWAY MARKER

No. 840386 (HIL840386)



29⁹⁹

24" PUSH BROOM W/SQUEEGEE

Durable rubber squeegee blades
work on oil as well as water.
No. 1230 (EJD1004616)



15⁹⁹

LAWN & LEAF BAGS

40 count. 39 gallon.
.9 mil. Black. No. 1124912
(RUF618871)



9⁹⁹

24" POLY LEAF RAKE

Makes for easy
clean-up.
No. 1920300 (MG24)



FISKARS

24⁹⁹

24" LEAF RAKE

Uniquely curved, extra-wide tines
transport leaves without clogging.
(FK96605935)

TENAX

39⁹⁹

4' x 100' SNOW FENCE

Orange polygrid.
Easy to install. Rust,
rot and corrosion proof.
Protects trees, crops and
shrubs. (SAFSN0100)



4⁹⁹ Each

4' LIGHT-DUTY FENCE POST

Poly coated steel.
(150235)

5' Post

(5FENCEPOST).....

5.99



EATON
HOME & GARDEN

10⁹⁹

3' x 12' 100% NATURAL BURLAP

Reduces erosion and conserves
moisture while grass or seedlings
get started. No. 2576 (BCI555771)



7⁹⁹

FROST BREAKER GLOVES

No. 1788-M, 1788-L, 1788-XL
(KINCO1787M) (KINCO1787L) (KINCO1789X)

Kinco



38⁹⁹

2000XL LED CORDED WORKLIGHT

Water and dust resistant with cast metal housing and a heavy duty power cord.
No. WORK2000XLPLUGF (WORK2000XL)



59⁹⁹

5000LM LED CORDED WORKLIGHT

Water and dust resistant with cast metal housing and a heavy duty power cord.
No. WORK5000XLPLUGF (WORK5000XL)



39⁹⁹

3000XL LED CORDED WORKLIGHT

Water and dust resistant with cast metal housing and a heavy duty 18/3 power cord.
No. WORK3000XLPLUGF (WORK3000XL)



99⁹⁹

6000LM LED TRIPOD WORKLIGHT

Water and dust resistant, features shock-resistant aluminum housing and a heavy duty 18/3 cord.
No. WORK3000XLTPUGF (WORK6000XL)



**RIGHT PRICE
EVERY DAY!**

**SAVING YOU
MORE**



14⁹⁹

LED SMART BULB

Soft white. 60w equivalent w/battery backup. Reliable, rechargeable emergency lighting turns on even if you lose power.
(EJD3002220)



WE HAVE ALL YOUR ELECTRICAL NEEDS. JUST ASK!



25⁹⁹

6' 16/2 EXTENSION CORDS

All vinyl cord. 3-outlet connector. Brown or White. (166BREXTN) (765644)

Woods®



5⁹⁹

ORANGE CUBE TAP

Converts single grounded outlet into 3 grounded outlets. 15A/120V. UL listed. (0100694)

Woods®



6⁹⁹

6-OUTLET POWERSTRIP

5A circuit breaker, built-in screw head slots. 3' 14/3 SJT cord. (1650149)



10⁹⁹

12/3 2' EXTENSION CORD W/POWER BLOCK

Indoor or outdoor use. No. 10P-003-002FOGP (TSC)



14⁹⁹

OUTDOOR PHOTOCELL TIMER

Black. No. 50013ACWI (825205)



Woods®

18⁹⁹

7-DAY DIGITAL HD TIMER

Specially designed to be used with heavy-duty appliances. (EW1650165)



8⁹⁹

PLASTIC FLOOD LIGHT HOLDER

Fully assembled unit. Porcelain socket resists the elements. No. 430 (392969)



12⁹⁹

2 PK. PAR38 LED FLOOD LIGHTS

Color-consistent, low-heat, durable and has long life. Warm White. No. PAR3875/10KLED2 (EJD3765658)



35⁹⁹

80' OUTDOOR EXTENSION CORD

16/3. Vinyl jacket resists moisture and abrasions. UL listed. Green. No. 990394 (0165697)



20⁹⁹

50' OUTDOOR POWER CORD

16 gauge. Water resistant. Durable, flexible cord. Orange. No. 3504396 (6527752)

JET SLED JR.
42"L x 21"W x 8"H. Durable polyethylene. Specially contoured hull. Molded runners. Includes tow rope. Weighs just 6 lbs.

39⁹⁹

BLACK
No. JSR (JSR)
Contents not included.

EAGLE CLAW
Shappell



59⁹⁹

JET SLED 1 BLACK

No. JS1 (JS1)



\$269

M12™ HATCHET 6" PRUNING SAW

Delivers up 120 cuts per charge. 4.0Ah battery delivers best in class run-time and performance. No. 2527-21 (2527-21)

\$499

M18 FUEL™ CHAINSAW KIT

Same power and performance as a 40cc gas chainsaw. (2727-21HD)



\$199

GEN2 20V BLOWER

125 MPH 450 CFM. High efficiency. (DCBL722P1)



\$219

20V 8" PRUNING SAW KIT

Compact design for easy access to tight spaces. High-efficiency brushless motor designed to maximize run time and motor life. No. DCCS623L1 (DCCS623L1)

DURACELL® BATTERIES

YOUR CHOICE **6⁹⁹**

DURACELL BATTERIES

Long-lasting Coppertop batteries. Choose from 9V, 1-Pk., C, 2-Pk., D, 2-Pk., AAA, 4-Pk. or AA, 4-Pk. (MN1604B1Z, MN2400B4Z, MN1500B4Z, MN1300B2Z, MN1400B2Z)



YOUR CHOICE **10⁹⁹**

DURACELL BATTERIES

Long-lasting Coppertop batteries. Choose from 9V, 2-Pk., C, 4-Pk., or D, 4-Pk. (MN1300R4Z, 196615, MN1400R4ZX1)



22⁹⁹

DURACELL BATTERIES

Long-lasting Coppertop batteries. AA, 20-Pk. (MN15BPT099)

WHILE SUPPLIES LAST.

Hammond Lumber Company :3

RIGHT PRICE
EVERY DAY!

SAVING YOU
MORE

PineMountain®

12⁹⁹

5 LB. PINE MOUNTAIN
STARTER STIKK
FATWOOD FIRE STARTER

A quick and convenient way
to kindle your wood fire.
No. 531-160-812 (EJD4565537)



3⁹⁹

STORM
WINDOW KIT

36"W x 72"H 1-window.
2 mil. Clear. Brand may vary.
No. EZ-36 (P71H)

INTERIOR SHRINK-FIT
WINDOW INSULATION KITS

3⁵⁹

INDOOR WINDOW

3' x 5' 1 sheet film 42" x 62",
1 roll tape. (07757801863)

9 Pk. 9 plastic sheets, 42" x 62".
3 rolls double faced tape,
1/2" x 54'. (V739)

16.99

8⁹⁹

PATIO DOOR

Stop cold drafts and
prevent frosty windows.
1 sheet film 84" x 110",
1 roll tape. (331454)

PROTECT YOUR HOME FROM THE ELEMENTS! WEATHERIZE NOW!



2⁹⁹

3/8" FOAM
WEATHERSTRIP

Waterproof, self-stick
closed cell PVC. Fills
even irregular gaps.
Gray. (07757801271)



4⁹⁹

1/2" FOAM
WEATHERSEAL

Conforms to irregular
gaps in doors and
windows. Charcoal.
(1234005)



7⁹⁹

1-1/4" FOAM
CAMPER
MOUNTING
TAPE

Cushioned to help
prevent vibrations
and rattles. (220913)



3⁹⁹

3/4" POLY FOAM
WEATHERSEAL

Self stick tape. Fills
very narrow gaps.
For interior use only.
White. (L342)



2⁹⁹

5/8" FELT
WEATHERSEAL

Can be nailed, stapled
or tacked in place.
Fits one average
window or door.
(07757801101)



6⁹⁹

3/8" X-TREME
RUBBER
WEATHERSEAL

Long-lasting, highest
quality weatherstrip will
not harden, crack or
freeze. (V23WA)



YOUR
CHOICE 5⁹⁹

WEATHERSEAL TAPE

3/4" RUBBER FOAM
Self-adhesive backing. Press to
surface for fast, permanent bond.
(R534H)

2" TRANSPARENT
Used to install plastic storm
windows, seal air leaks and more.
(07757801261)



8⁹⁹

36" ALUMINUM
DOOR BOTTOM

Provides exceptional barrier against
drafts, dust, moisture and insects.
Includes screws. (688309)

36" Gold (TWA5836H) 10.99



6⁹⁹

PIPE WRAP
INSULATION TAPE

2" x 15'. On cold
pipes, stops sweating
and dripping. (FKFV15)



2⁹⁹

SWITCH &
OUTLET WEATHER STRIP

4 single switch and 8 single
receptacle strips per
package. (4535936)



5⁹⁹

FIBERGLASS
PIPE-GUARD

1/2" thick. Suitable for
use on hot and cold
water pipes. (GW125)

EASYHEAT®



29⁹⁹

9" PIPE
HEATING CABLE

Keeps water flowing down
to -40°F (-40°C). Power
indicator light! Energy-
saving thermostat. (242027)



44⁹⁹

30' ROOF/
GUTTER DE-ICER

Keeps gutters and
downspouts flowing to
prevent roof damage and
leaking. (378403)

Frost King

14⁹⁹

62" x 25' CLEAR
SHRINK FIT
WINDOW FILM

For 3 large windows/doors.
NO. V6225 (TWW6225)

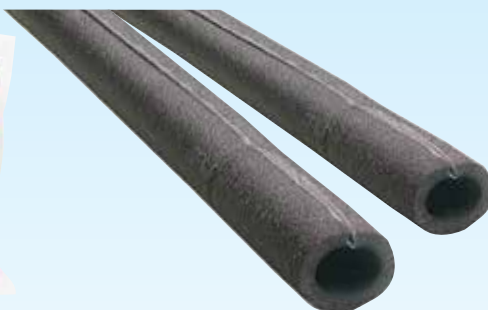


12⁹⁹

9' GARAGE DOOR
WEATHER STRIP

Tough, specially compounded extruded
rubber. Flexible. Resists abrasion and
temperature extremes. (GDB9)

16' Weather Strip
(GDB16) 15.99



4⁹⁹

1/2" x 36" FOAM PIPE INSULATION

Cuts heat costs by 60%. Pre-slit.
4 Pack. (453423)

3/4" x 36" (453431) 5.99

1" x 36" (P12X) 6.99



3⁹⁹

3 LB. FIRELOG

Lights quickly - full flames in
less than 5 minutes. Made with
100% renewable resources.
Burns cleaner than wood.
No. 00633 (3FIRELOG)

KIDDE

24⁹⁹

FIRE
EXTINGUISHER

Effective on flammable
liquids plus wood, paper,
cloth, rubber, most plastics
and electrical fires.
No. 1A10BC (466142)



SELKIRK

\$215

48" ULTRA-TEMP
CHIMNEY
PIPE

For MetalBestos
chimneys.
No. 6T-48 (6T48)



YOUR
CHOICE 13⁹⁹

BLACK STOVEPIPE

6" x 24" 24 gauge stovepipe section.
6" 24 gauge adjustable elbow.
(6HDBSP) (6HDBE)

FIRST ALERT

15⁹⁹

SMOKE ALARM

Ionization sensor.
Test/silence button for
efficient testing to ensure
alarm is working properly.
No. 1046827 (EJD5050050)



22⁹⁹

CARBON
MONOXIDE ALARM

9V battery (included). Test/silence button silences the
alarm, unit monitors and re-alarms if carbon monoxide
levels persist. 5 year limited warranty. UL listed.
No. CO400 (FCD3NCN)



Rinnai DIRECT VENT WALL FURNACES

\$1349

8,000 BTU PROPANE

Perfect for smaller areas that require heat. Compact design allows flexible and easy installation options. "Cool to the Touch" cabinet, setback features and user-friendly control. Whisper quiet fan. Child safety lock. Programmable thermostat. Sealed combustion. 7-State modulating gas valve and variable speed blower. 10-year heat exchanger warranty, 5-year parts, 2-years labor. Standby power less than 1 watt. Temperature setting in Celsius or Fahrenheit. Self-diagnostic with error code indicator. (EX08)

11,000 BTU LP (EX11).....\$1649



Control Panel
Newly Designed, User Friendly. Choose a set temperature or program the timers to take total control over your heating needs.

RIGHT PRICE EVERY DAY!

SAVING YOU MORE

BRK

15⁹⁹

BATTERY OPERATED SMOKE ALARM

9V battery included. Test/silence button. No. 1046832 (EJD5050045)



\$2149

20,700 BTU LP

7-stage modulating gas valve, providing comfortable, even heat to all areas of the room. It also includes LED temperature controls with memory setting feature, child safety lock and an economy mode for increased energy efficiency. (EX22)

36,500 BTU HEATER (ES38).....\$2449

Comfort Glow

29⁹⁹

1,500W OSCILLATING CERAMIC SAFETY FURNACE

This Comfort Glow ceramic safety furnace offers a new sleek, slim modern, heater design. The safety furnace features ceramic fin elements that permit maximum air flow. No. CEH255 (CEH255)



\$70

LITTLE BUDDY PROPANE PORTABLE HEATER

3,800 BTU. Heats 95 sq. ft. 1-button ignition on function. No. F215100 (LILBUDDY)



\$89

PORTABLE BUDDY PROPANE SPACE HEATER

9,000 BTU. Heats 225 sq. ft. Includes swivel regular, fold down handle, accidental tip-over safety shutoff & piezo igniter. No. F232000 (F232000)



\$149

BIG BUDDY PROPANE HEATER

18,000 BTU. Provides 450 sq. ft. of coverage for up to 11 hours with dual tanks. Safety shut-down systems. No. F274805 (F274805)

MAKE SMART DECISIONS ABOUT YOUR HOME'S HEATING

\$159

30,000 - 60,000 BTU PROPANE HEATER

1,500 sq. ft. coverage. No. RFG60V (GFA60A)



\$99

30,000-40,000 BTU 360° TANK TOP HEATER

Rust-proof chrome emitter guard. Operates up to 14 hours on a 20 lb. tank. No. TT-360 (TT360)



\$99

15,000-25,000 BTU LP CONVECTION HEATER

Projects heat 360°. No electricity required. Ideal for the DIY'ers. No. LPC25 (LPC25)



\$299

80,000 BTU KEROSENE FORCED AIR HEATER

2,000 sq. ft. coverage. No. RFA80T (DFA80T)



69⁹⁹

1,500W ELECTRIC FORCED AIR HEATER

Heavy-duty stainless steel heating element with powerful fan provides 5,120 BTU of heat. Heats area up to 250 sq. ft. Built-in thermostat with overheat shut-off. 6' power cord. No. EUH1500 (EUH1500)



Comfort Glow

79⁹⁹

SLEEK PORTABLE OIL FILLED HEATER

Provides 5,120 BTU of soft, quiet, continuous heat without the noise of a fan. Easy lift front and rear carrying handles. Includes wheel kit. (E0F261)



189⁹⁹

23,000 BTU KEROSENE HEATER

Built on a rugged steel frame. Provides a safe, clean and reliable source of economical and emergency heat. Accidental tip-over switch, and protective grill guards. 2-year limited warranty. (DH2304)



Bio Pellet LLC

\$499

Unit THE ORIGINAL BIOBRICKS®

Designed to excel in wood stoves & fireplaces. Your environmentally conscious, easy to use, economical solution to winter heating. Uniform rectangular shape which makes it easier to tightly pack a stove with the greatest amount of BioBricks. 2 lb. brick, 20 per purchase. 50 packages/pallet. (BIOBRICK)

\$99

3 GAL. ASH VACUUM

Cleans warm and cool ash out of fireplaces, wood and pellet stoves and BBQ grills. Heat-resistant filter system captures the finest dust and ash. No. PAVC101 (SV4041200)



Imperial

74⁹⁹

4 GAL. ASH CONTAINER AND SHOVEL SET

Durable black matte finish. Steel bail. Turned wooden handle for carrying comfort. Double bottom for safety. No. BAP-KIT (EW1280287)



Comfort Glow

34⁹⁹

ELECTRIC UTILITY HEATER

750/1,500W. Fan-only setting. Automatic thermostat. Power indicator light. No. EUH341 (EUH341)



WHILE SUPPLIES LAST.

Hammond Lumber Company :5

**RIGHT PRICE
EVERY DAY!**
**SAVING YOU
MORE**

Purdy
PROFESSIONAL PAINTING TOOLS

12⁹⁹

4-PK. ROLLER COVERS

3/8" nap. 9" roller.

For all latex and oil based
paints and stains. White. (1334565)



Benjamin Moore®

\$5⁰⁰ OFF
Gallon



INSULX

**STIX®
WATERBORNE
BONDING PRIMER**

Bonds to hard-to-coat
surfaces. Cures in
temperatures as low
as 35°F. (SXA110G)



**WATERBORNE
CEILING PAINT**

Ultra flat, hides common
ceiling imperfections for
a look that is virtually
flawless. Easy application.
Minimal spatter. Zero VOC.
(BM50809G) (BM5081XG)

Benjamin Moore®

\$5⁰⁰ OFF
Gallon



**FAST DRYING PRIMER OR
DRYWALL PRIMER**

An acrylic primer for interior use on new
or previously painted drywall and plaster.
No. 050700-001, 03800-001
(BM50700G) (BM38000G)



NOW'S THE TIME TO SPRUCE UP YOUR HOME INSIDE & OUT



69⁹⁹

GAL. B-I-N PRIMER

White pigmented shellac
hides fire, smoke, water,
sap, grease and crayon
stains. (BING)

28⁹⁹

**GAL. BULLS EYE
1-2-3 PRIMER**

Blocks out stains, seals
all porous surfaces and
adheres to slick surfaces.
(BULLG)

36⁹⁹

GAL. SMART PRIME

Oil-base performance in
an advanced water-base
formula. Sticks to all
surfaces. (ZIN249729)

44⁹⁹

**GAL.
ODOR KILLING PRIMER**

Kills existing odors on
interior surfaces. (ZIN305928)

45⁹⁹

**GAL.
MOLD KILLING PRIMER**

A water based fungicidal
protective coating. (BINMKG)

34⁹⁹

**GAL. BULLS EYE
ZERO™ PRIMER**

Eco-friendly, zero VOC
water based formula.
(249020)



21⁹⁹

**3 PK. 1.88" x 60 YD.
PAINTER'S TAPE**

14-day interior and exterior
clean removal leaves
behind no damage or sticky
residue. (209048EP3)



WOOSTER®



7⁹⁹

**EACH
SILVER TIP™
ANGLE PAINT BRUSH**

Made with CT™ polyester filaments.
Birch hardwood handle. 2" angle or
2-1/2" angle. (52212) (5221212)



8⁹⁹

**GOLDEN FLO™
ROLLER KIT**

For all flat paints and
stains. Includes roller
cover, 5-wire cage utility
frame and 1-qt. capacity
deluxe metal tray. (R914)

WOOSTER®



3⁹⁹

HANDY PAINT CUP

Built-in magnetic brush
holder. Perfect for trim
work. (HANDYCUP)

**HANDY
Paint Pail**



10⁹⁹

HANDY PAINT PAIL

Designed to make your
painting projects a breeze!
Ruggedly constructed for
both professional and do-it-
yourself painters. (HPPL)



UGL

**YOUR
CHOICE 35⁹⁹**

**1 GAL. DRYLOK
MASONRY SEALER**

White or Gray. No. 27513, 27613
(LTXDRYWG) (LTXDRYGG)

TRIMACO

3⁹⁹

**9" x 180' BROWN
MASKING PAPER**

General purpose use.
(7640919)



TRIMACO

17⁹⁹

**48" x 180'
PREMIUM
MASKING FILM**

Attracts overspray and
prevents flaking. Clings
to most surfaces.
(MF48)



WERNER

59⁹⁹

2' ALUMINUM TYPE 1A STEP STOOL

300 lb. duty rating. The
Traction-Tred® steps are slip
resistant and the external spreaders are pinch proof.
Molded vinyl foot pads riveted to rails. (2ALUM1A)

8⁹⁹
**12 OZ. NO WARP
WINDOW & DOOR
INSULATING SEALANT**

Fills, seals and insulates.
Outperforms fiberglass.
No. 7565004000 (200220)



ArreWordly



16⁹⁹

12-PC. MINI ROLLER KIT

Includes 10-pk. 4" microfiber
mini rollers, 4" Barracuda mini
roller frame and 7" plastic tray.
(EW4004621)



ArreWordly

14⁹⁹

**10 PK. REFILL
MICROFIBER MINI
4" ROLLER COVERS**

3/8" nap. (EW4002342)

16⁹⁹

CAULK GUN

Extra-long clean-out rod
snaps in place when not
in use. Rotating barrel.
No. ETS2000 (7170076)



7⁹⁹

**2-IN-1
PUTTY KNIFE**

1-1/4". Chisel blade to
remove old putty. Slotted
"V" blade to apply and smooth
putty. (B46236)



HYDE



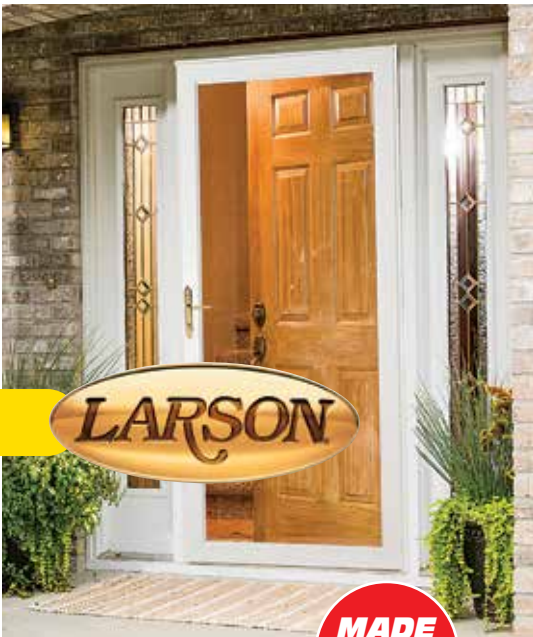
STORM DOORS

\$219

VINYL CLAD
32" x 81". Self-storing glass and screen. Black push button handle. Maintenance-free vinyl over wood core. 5 year warranty. No. 298-SS (029831U)
36" x 81"
(029832U) **\$219.00**

\$385

LIFESTYLE
32" or 36" x 81". Screen Away® retractable screen. DuraTech finish over wood core. Brass finish SecureLock handle. Limited lifetime warranty. No. 830-80 (83080WH32/36) (83080031) (83080032)



\$319

CLASSIC VIEW
32" or 36" x 81". Clear glass, brass interior & exterior handles with built in deadbolt security lock. Interchangeable screen included. No. 350-04 (35004031/32)

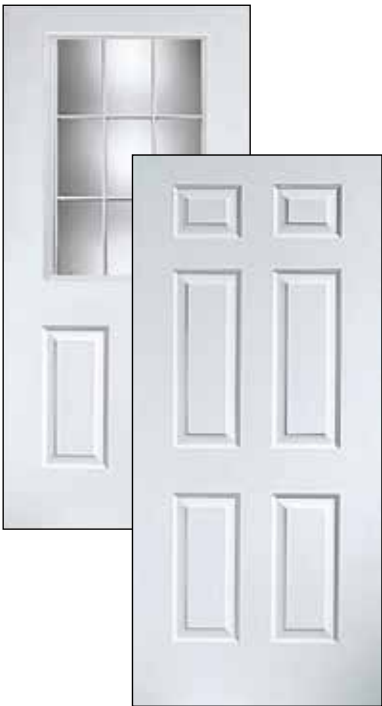


THERMA-TRU® DOORS

FIBERGLASS ENTRY DOORS

Final Frame with rot-proof bottom, giving the door and jamb lifetime warranty. Ask for details.

An excellent value in a fiberglass entry door, made of rugged compression-molded fiberglass with deep detailed panels that create beautiful shadows and contours on your door's surface. These perfectly stylish yet rugged fiberglass front doors resist the dents and dings from day-to-day traffic and will never rust or corrode.



\$615

1 LITE, 2 PANEL
SS302066R/L

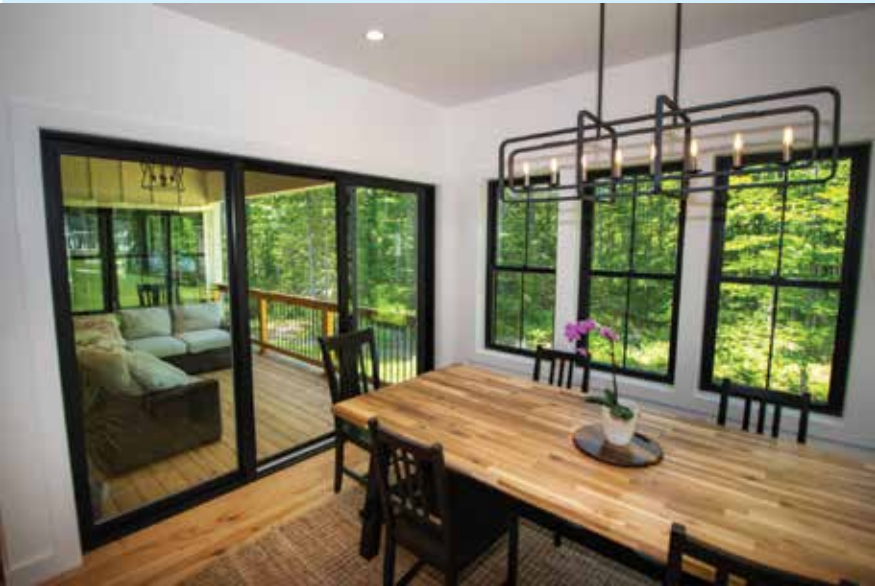
\$665

9 LITE, 2 PANEL
SS302626R/L

\$538

6 PANEL
SS302106R/L

CHECK US OUT ONLINE www.hammondlumber.com



MATHEWS BROTHERS

MATHEWS BROTHERS WINDOWS
Providing energy-efficient and affordable windows and doors that are durable and stylish has been our New England legacy for 167 years.



ROCKWOOL

COMFORTBATT THERMAL HOME INSULATION

For exterior walls, basements and crawl spaces.

R-15 15" O.C. (RCBR1515)..... **85⁹⁹**

24" O.C. (RCBR1523)..... **86³⁹**

R-23 15" O.C. (RCBR2315)..... **88⁹⁹**

24" O.C. (RCBR2323)..... **84⁹⁹**



R-30 15" O.C. (RCBR3015)..... **85²⁹**

24" O.C. (RCBR3023)..... **86²⁹**

FIBERGLAS® INSULATION

KRAFT FACED BATTS

69⁹⁹ R-19 6"x15" 77.5 sq. ft./Bundle (615K)

108⁹⁹ R-19 6"x24" 118.832 sq. ft./Bundle (624K)

UNFACED BATTS

65⁹⁹ R-19 5-1/2"x15"x93" 77.5 sq. ft./Bundle (615U)

The higher the R-value, the greater the insulating power. Ask your seller for the fact sheet on R-values.



GacoRoof®

\$140

2 GAL. GACO PATCH

A flashing grade, standalone silicone roof patch designed to provide a long-lasting solution for a leaking roof. The convenient wide-top pail makes application easy to do with a trowel or a brush. One-step application eliminates the cost of additional products such as primers, seam tapes or top coats. (BLKPATCH)



Premium Building Products That Protect

184⁹⁹

JIFFY SEAL® 140/60

3' x 75' polyester reinforced, peel and stick sheet waterproofing membrane. (PROTECTO)



IKO®

129⁹⁹

ARMOURGARD ICE & WATER BARRIER

3'x65'. Helps prevent roof leaks! Protect against water leakage due to ice dams and wind-driven rain. (ARMGUARD)

IKO® Setting the Standard

CALL FOR PRICING

CAMBRIDGE

- Limited Lifetime Warranty
- 15-Year IKO Iron Clad Protection
- 3 bundles cover 100 Sq. Ft.
- Laminated architectural design



OWENS CORNING®

CALL FOR PRICING

TRU DEFINITION® DURATION® SHINGLES

Provides greater contrast and dimension to any roof. Available in popular colors with bold, lively contrast and complementing shadow lines for added dimension. Features a Limited Lifetime Warranty, 130-MPH Wind Resistance Limited Warranty, and an Algae Resistance Limited Warranty. Comes with the advanced performance of patented SureNail® Technology. Colors available: Sierra Gray, Estate Gray, Onyx Black, Driftwood, Brownwood, Chateau Green or Desert Tan.



WHILE SUPPLIES LAST.

Hammond Lumber Company :7

RIGHT PRICE EVERY DAY!

SAVING YOU MORE

**WE CARRY AZEK,
TIMBERTECH, TREX & MORE!**
Our salespeople are happy to help you with your design,
product choices, and framing methods, and can refer
you to a couple of reputable builders in your area to build it.
We have all the structural materials you need to complete
your project! Wood options are also available.
Prices subject to change.



HOME PACKAGES – MANY TO CHOOSE FROM OR CUSTOMIZE YOUR OWN

HOME PACKAGES

Make your dreams a reality! We'll deliver your complete package directly to you for free at your convenience. Hammond Lumber Company's home packages include the following:

- Lumber for framing
- Sheathing/plywood
- Insulation
- Sheetrock/drywall
- Windows
- Exterior doors
- Interior doors
- Vinyl siding
- Roof shingles
- Interior trim
- Nails/hardware
- Kitchen cabinetry allowance/budget
- Bath cabinetry allowance/budget
- Flooring allowance/budget



Our friendly and knowledgeable sales team is ready to discuss any package details with you, including the actual material list so that you're completely clear on what is and what is not included.

GARAGE PACKAGES

Offering you 6 different garage styles and customized options!

Hammond Lumber Company provides the highest quality garage packages available. We offer a variety of styles at prices you'll appreciate. We have a full fleet of delivery vehicles, so you'll receive your materials in a prompt and efficient manner. Contact our expert team for more information!

www.hammondlumber.com/garagepackages

The Congress: 28' x 28'

3 Bedroom, 2-1/2 Bath,
1319 Sq. Ft., Master Suite,
Front Porch, Slab
Construction, 1-Car Garage



The Preble: 38' x 28'

2 Bedroom, 1 Bath,
944 Sq. Ft., Full Basement,
Open Concept, Front Porch



**See all of our package options at
HammondLumber.com*

Cape Cod: 28' x 36'

4 Bedroom, 2 Bath,
Laundry Room,
Kitchen/Dining Area,
Living Room,
Optional Deck



The Oxford: 52' x 26'

2 Bedroom, 2 Bath, 1160 Sq. Ft., Full Basement,
Master Suite, Front Porch



Wrangler:

- 24' x 24' 2-Bay
- 2 x 4 x 8 Framing 24" on center
 - 7/16" OSB wall sheathing
 - 5/8" roof sheathing
 - 25-year 3-tab shingles
 - 2 Single-hung vinyl windows
 - 2 9' x 7' Steel, non-insulated classic raised panel garage doors

Yukon:

- 24' x 36' 3-Bay
- 2 x 4 x 8 Framing 24" on center
 - 7/16" OSB wall sheathing
 - 5/8" roof sheathing
 - 25-year 3-tab shingles
 - 4 Single-hung vinyl windows
 - 1 3'0" x 6'8" Premium steel door
 - 3 9' x 7' Steel, non-insulated classic raised panel garage doors

Highlander:

- 28' x 36' with Living Space
- 2 x 4 x 10 Framing 16" on center
 - 7/16" OSB wall sheathing
 - 5/8" roof sheathing
 - Gambrel trusses with 8' ceiling (see salesperson for design details)
 - Stair framing material with landing
 - 25-year 3-tab shingles
 - 6 Single-hung vinyl windows



DRAFTING SERVICES

Building a new home or
fixing up an old one?

Just bring your ideas and rough sketches to any Hammond Lumber Company location and our team of professional home designers will work with you to create the drawings and material list you need.

- Custom Homes
- Additions
- Remodels
- Garages
- FREE consultation and material estimates
- FREE drawing after materials purchase

HammondLumber.com/HomePlanning

HURRY! Sale Starts 11/5/25 - Sale Ends 12/23/25

Hammond Lumber Company



***FREE
DELIVERY
WITHIN
STRIKING
DISTANCE
OF OUR
STORES**

All services will be rendered as quickly as possible. We apologize for any unavoidable delay, which may be inconvenient. Not responsible for typographical errors. Some items are limited to stock on hand and will be available while quantities last. Individual stores may not stock all items. Pictures may not be representative of items shown. Free delivery within our trading area. Some items may require assembly.

VISA
AMERICAN EXPRESS
DISCOVER
mastercard

SALE PRICES ONLY AT...	Ellsworth 667-7134	Cherryfield 546-7384	Bucksport 469-7313	Blue Hill 374-2814	Machias 255-3328	Calais 454-2576	Bar Harbor 288-9756	Belfast 338-4080	Camden 236-3371	Rockland 596-6205
------------------------	-----------------------	-------------------------	-----------------------	-----------------------	---------------------	--------------------	------------------------	---------------------	--------------------	----------------------

8: Hammond Lumber Company

WHILE SUPPLIES LAST.